

# SEVIS II Requirements Process Overview

---

- ▶ Develop Business Process Flow
- ▶ Create Activity Diagram for SEVIS II user functions
- ▶ Write Use Case to document user steps and data elements
- ▶ Develop Wireframes for functionality layout
- ▶ Design User Interface



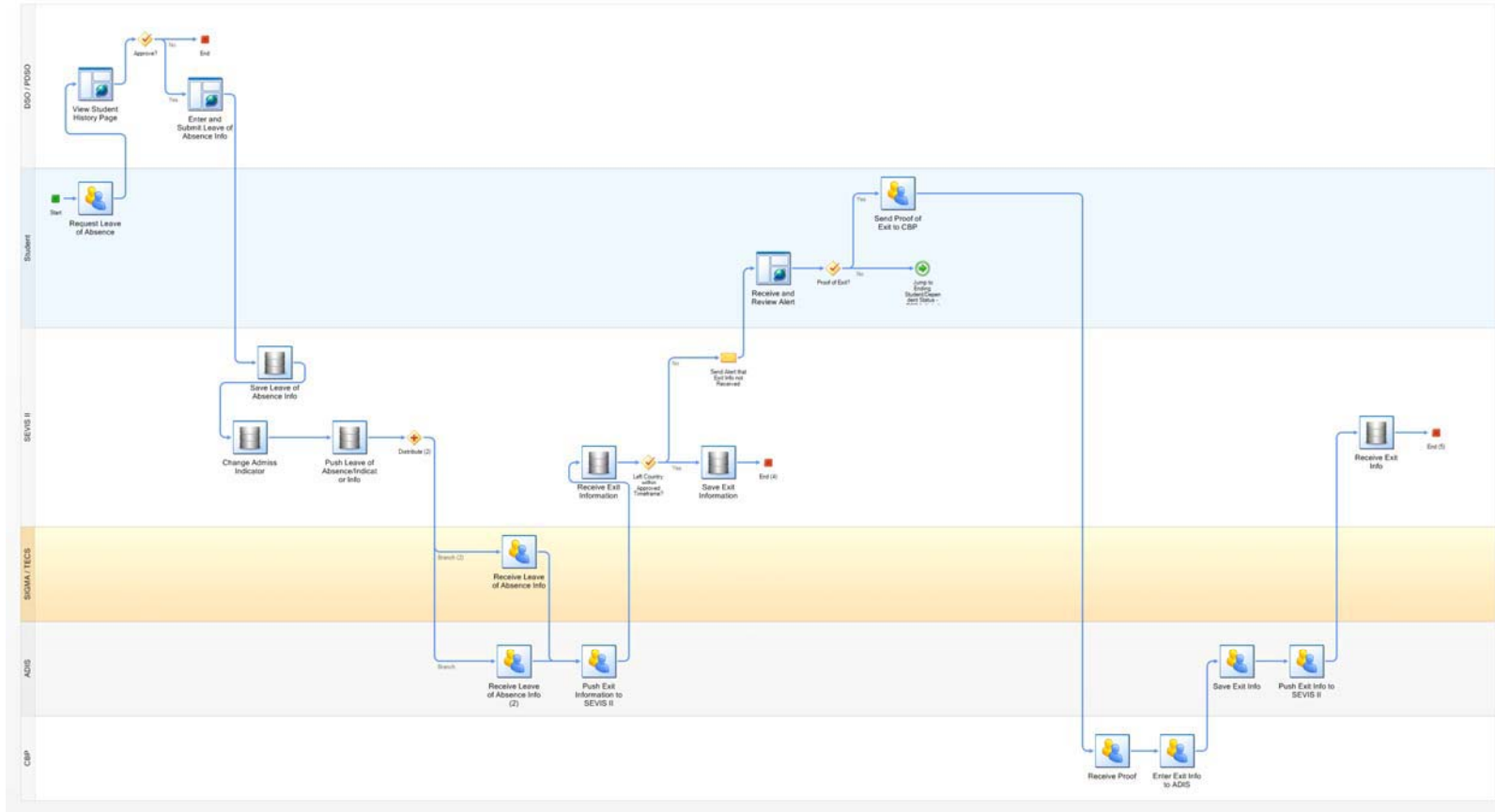
# SEVIS II Requirements Process Business Process Flow and Activity Diagram

---

- ▶ Business Process Flow
  - Documented high-level processes for SEVIS II users
    - Example: Student Out of Country
  - Processes include specific user and system interface interaction
  
- ▶ Activity Diagram
  - Derived from Business Process Flow
  - Visual depiction of a specific function within SEVIS II

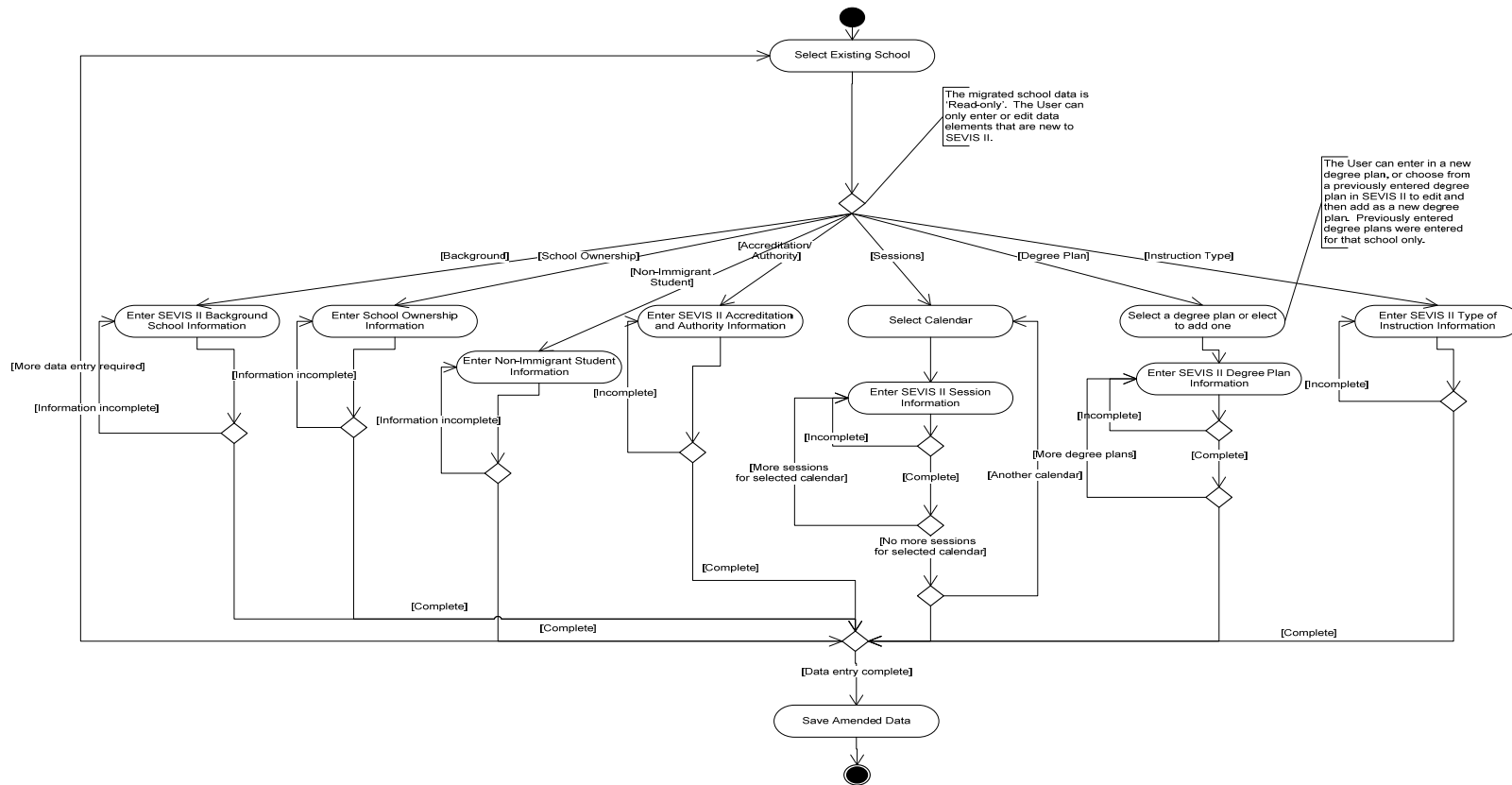


# Business Process Flow Example



# Activity Diagram Example

Amend Migrated School Data (PDSO/DSO)



# SEVIS II Requirements Process

## Use Case, Wireframes, and User Interface Design

---

- ▶ Use Case
  - Describes user steps in order to complete a specific function within SEVIS II
  - Captures Actors, Pre-conditions, Flow of Events, Requirements, Post-Conditions, and Data Elements
  
- ▶ Wireframes
  - Draft screen outline of data fields and use case flow of events
  
- ▶ User Interface Design
  - Captures use case details
  - Ensures 508 compliance
  - Utilizes usability best practices



DHS/ICE/DoS

# Introduction to the Customer Account

*This document is confidential and is intended solely for the use and information of the client to whom it is addressed.*

March 4, 2009



Booz | Allen | Hamilton

## The Customer Account is a fundamental addition to SEVIS II

---

### ▶ Goals

- Enable the concept of “one person – one record”
- Ensure accuracy for data input by school and sponsor officials
- Facilitate a paperless system by providing all users an electronic signature
- Allow students, exchange visitors, and dependants access to the system for the first time
- Incorporate an electronic admissibility indicator in lieu of Form I-20 and DS-2019
- Provide enforcement agencies an easier method of monitoring activities of nonimmigrant F, M, and J visitors

▶ To achieve these goals, all users will have an Immigration Identification Number (IIN)

▶ The IIN will be a unique identifier issued upon creation of a customer account



## The establishment of “one person – one record” is a primary requirement in, and underlying reason for, the creation of SEVIS II

---

- ▶ Those involved in, or seeking benefits from, the immigration line of business will provide personal biographic information
- ▶ Core data elements will be used to associate historical records of legacy users with their customer account and linked to their IIN
- ▶ The current record, along with the historical records will be used to establish a single profile for a user
- ▶ The user will be forever associated with their IIN for all future dealing in the immigration line of business
  - USCIS future business transformation will incorporate IINs into all facets of immigration benefits processing





# The customer account is necessary to establish a paperless system

---

- ▶ No paper Forms I-17, I-20, DS-3036, DS-3037, DS-2019 or any other SEVIS related form for immigration purposes
  - The printing of draft documents for review purposes will be possible
- ▶ Paperless process at the consulate, ports of entry, and in dealing with USCIS
- ▶ An official form for domestic purposes (DMV, banking, I-9 proof of employment, etc.) will be printable by School and Sponsor Officials on behalf of nonimmigrants



## The establishment of an electronic signature is vital to eliminating the need to print forms

---

- ▶ Electronically signed forms and data elements can be sent via interface to other agencies
- ▶ Signatures can be authenticated immediately, while obtained from users worldwide
- ▶ Signatures will be obtained via a PIN number, established by the user while creating their customer account
- ▶ Each signature event will be accompanied by text describing exactly what the user is signing and the consequences of the action



## Student and exchange visitor access to SEVIS II is a key enhancement

- ▶ Nonimmigrants entering their own biographic information will limit errors
  - This will benefit school and sponsor officials by allowing them to accurately input data into key forms by simply entering a valid IIN
  - Consistency of information in visa and DHS databases will enhance ability to properly match records
  - Students and EVs will be responsible for updating their own addresses
- ▶ Students and Exchange Visitors will be able to submit certain requests
  - This will enhance functional capabilities such as requesting a return from abroad
  - There will be documented records of all requests
- ▶ SEVIS II school or program information as well as immigration status information will be available



## An electronic admissibility indicator will be displayed on all nonimmigrant profiles

---

- ▶ Border officials will have an electronic indicator about the standing of Student/EVs trying to gain entry
- ▶ The indicator will be easy to interpret
  - Green – nonimmigrant is admissible by SEVIS II standards, barring issues outside of SEVIS II they will be permitted entry
  - Yellow – a second level of assessment is necessary
  - Red – nonimmigrant is not permitted to enter at this time
- ▶ Indicator will be viewable by Students/EVs
  - Additional help text will educate nonimmigrants as to meaning of indicator and any actions necessary to gain entry to US



## IIN and “one person – one record” principle

---

- ▶ Core data elements in SEVIS II linked to fingerprint information in other DHS systems will enable enforcement agencies to ensure legitimacy of F, M, and J candidates
- ▶ All users will have contact information on file
- ▶ Easier to detect fraud
- ▶ Enhanced data integrity

